

Resense™ Move

AI-powered multi-sensor enhancing energy efficiency, air quality, and delivering actionable insights.



30%

Operational energy use in buildings represents about 30% of global final energy consumption (IEA).



41%

of tenants plan to increase the use of flexible spaces as part of their development strategy. (JLL Global Flexible Space Report)



ft²

The square feet that costs the most and consumes the most is the one that is not used.



Every Move Counts

Optimize building space for maximum energy efficiency, transforming data into a strategic asset to guide smarter decision-making.

Intelligent detection



Precise data collection

A single sensor covers multiple functions: space use and environmental conditions.

AI-powered people counting

A thermal sensor provides accurate information on space occupancy with complete confidentiality.

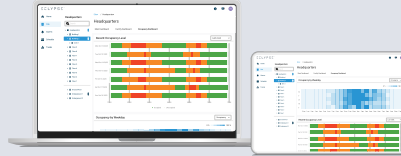
Smart zone-specific people counting

Optimize desk allocation with smart tracking and flexible zone exclusions.

Versatile installation

Various mounting options available to suit building constraints, whether for renovation or new construction.

Powered by fiable data



More than a sensor

The device itself is the controller, all the intelligence and power reside in the equipment.

Visual interaction

Real-time data is communicated via an intuitive LED indicator, providing immediate information.

Better data, better decisions

Comprehensive dashboards enable companies to make informed decisions.

To enhance your space experience



Dynamic spaces

In the DC Space solution, it optimizes energy efficiency and occupant comfort with an integrated HVAC, lighting and blind control system.

Effortless monitoring

Quickly identifies when and where cleaning is needed, while ensuring optimal indoor air quality for employees.

Meticulous design

White or black finish to blend in perfectly with your space.



People counting and presence detection



Light intensity



Temperature and humidity for dew point
Secondary sensors



Programmable LED



BACnet IP/SC, RESTful API, MQTT and Bluetooth



TVOC - Total Volatile Organic Compounds



Sound level



Native mobile application and Beacon



48 VDC power supply or passive PoE



To find out more about our solution, visit:
distech-controls.com

DISTECH
CONTROLS